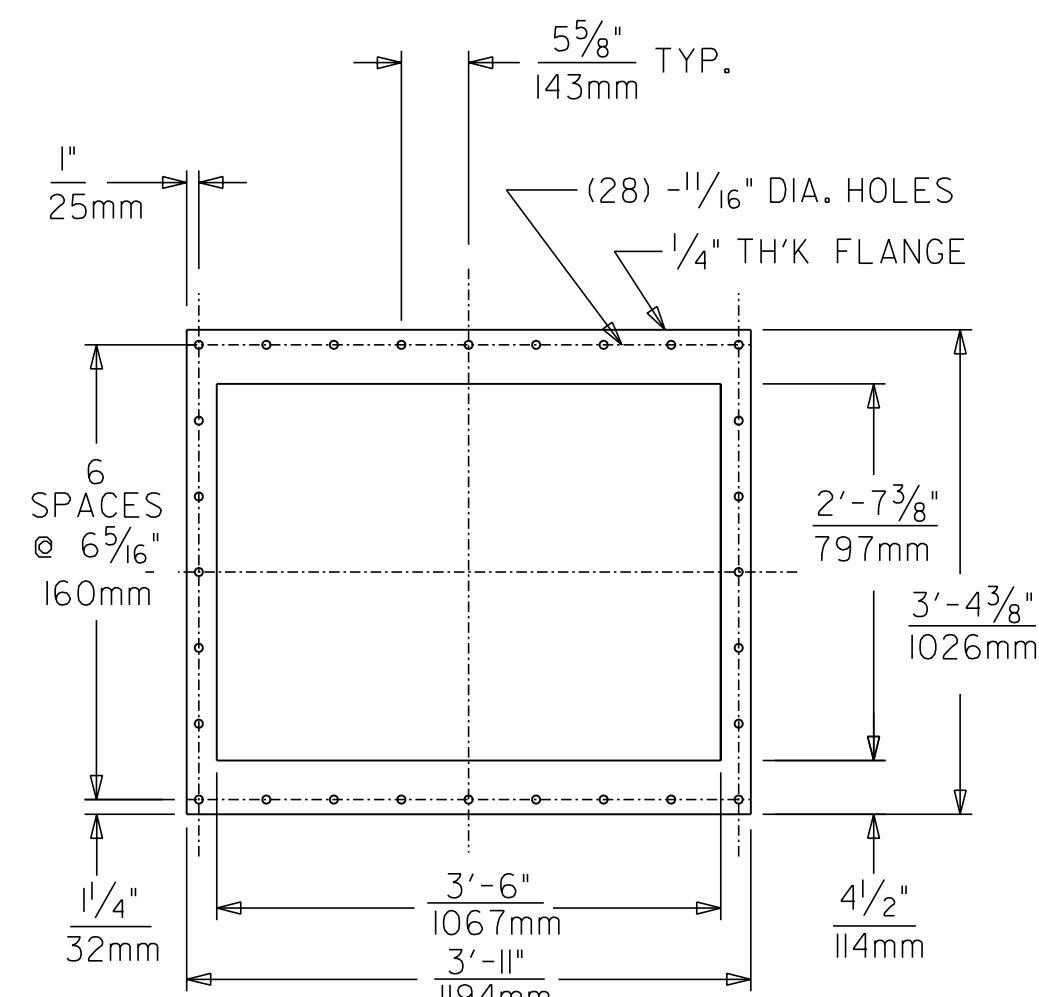
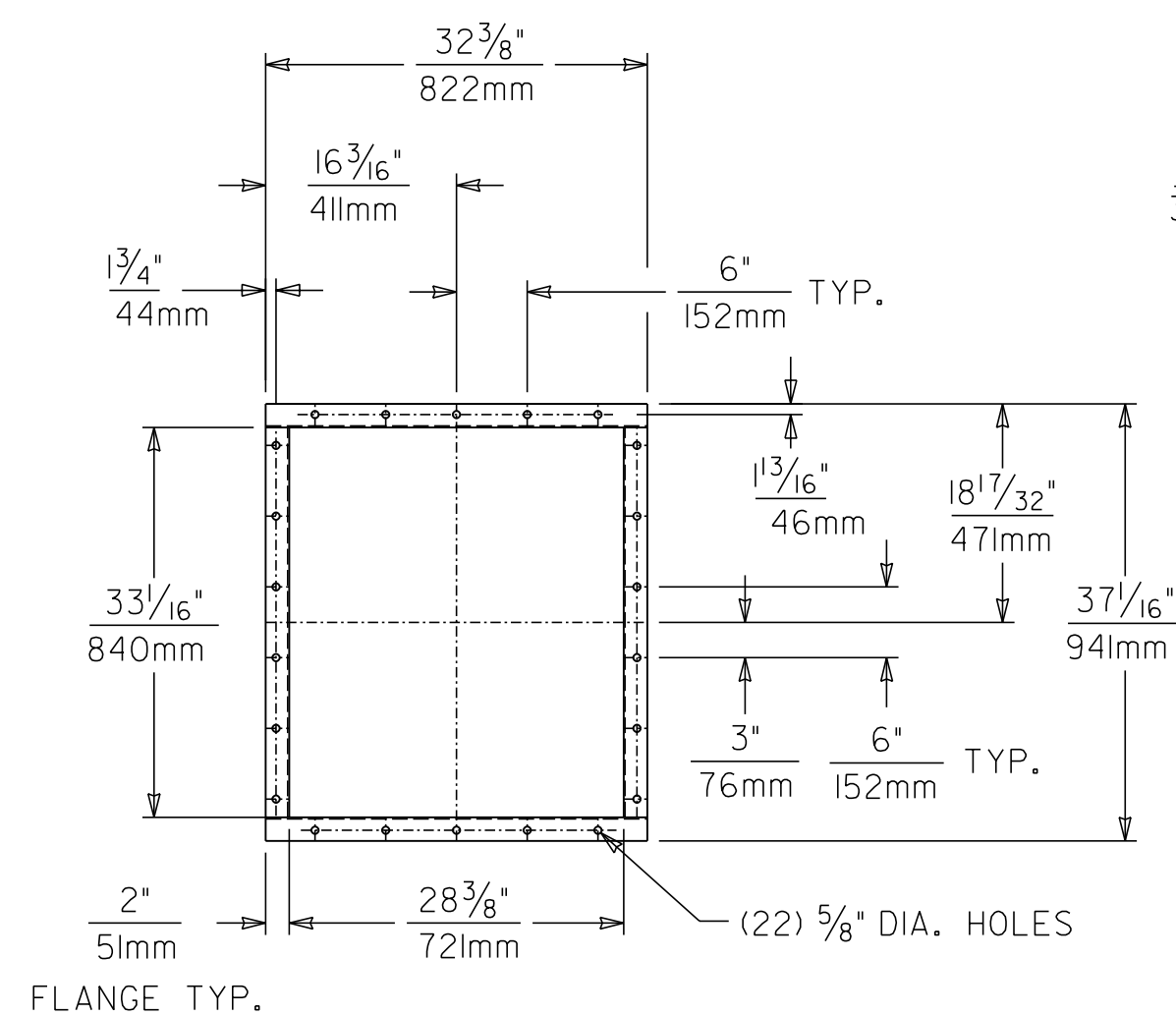


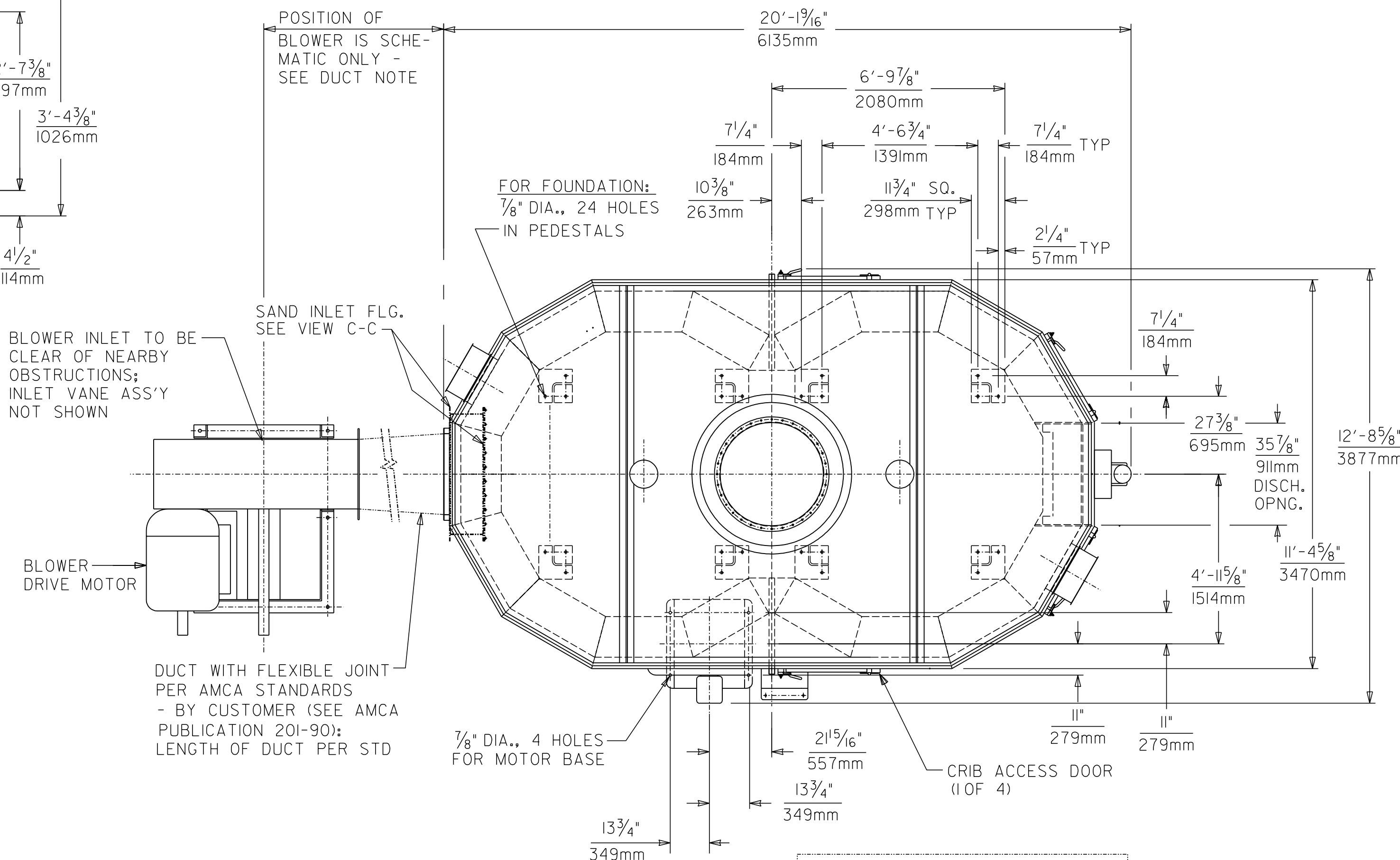
VIEW B-B
SCALE: 3/4" = 1'-0"



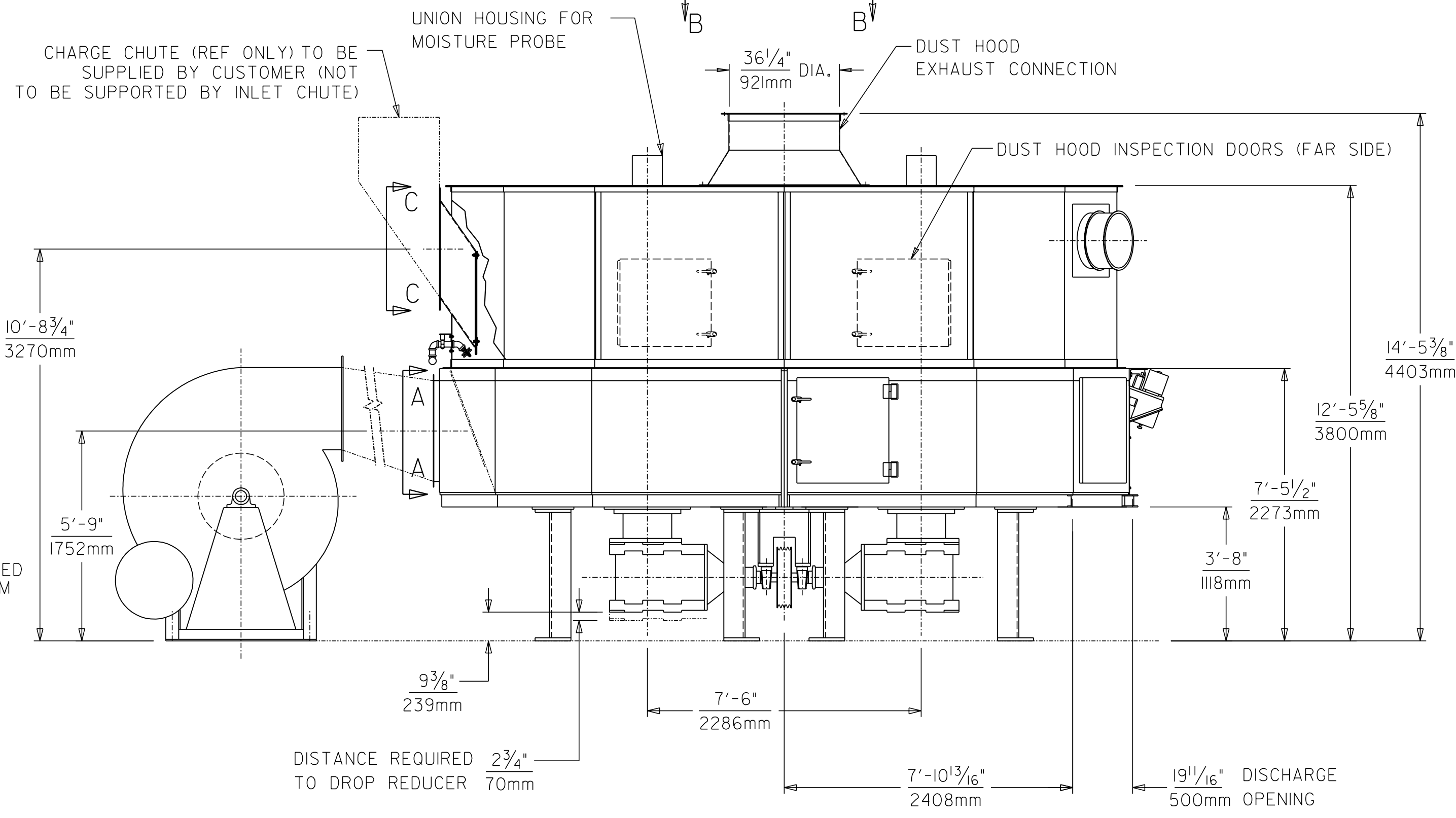
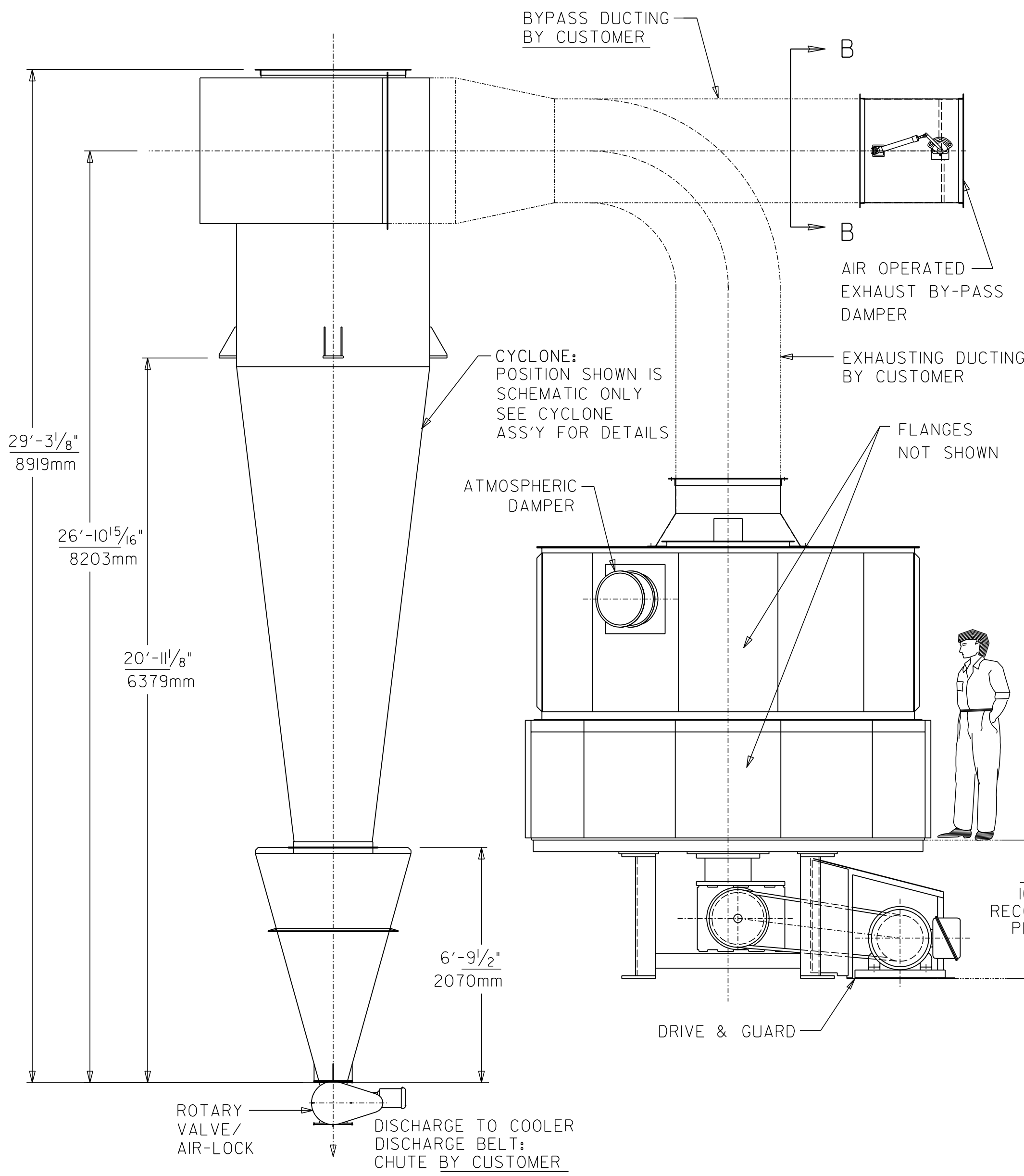
VIEW C-C
SAND INLET CHUTE FLANGE
SCALE: 3/4" = 1'-0"



VIEW A-A
SCALE: 3/4" = 1'-0"



NOTE: MOTOR BASE & LOCATION DIMENSIONS MAY VARY - SUBJECT TO FINAL DRIVE DESIGN



TECHNICAL DATA

OPERATING WEIGHTS:	
MULTI-COOLER	44000 lbs 19960 kg
LOAD / CENTER PEDESTAL	
STATIC	2 @ 5200 lbs 2 @ 2360 kg
DYNAMIC	2 @ 10400 lbs 2 @ 4720 kg
LOAD / END PEDESTAL	
STATIC	8 @ 5500 lbs 8 @ 2495 kg
DYNAMIC	8 @ 11000 lbs 8 @ 4990 kg
DRIVE MOTOR & CLUTCH	
	3000 lbs 1361 kg
BLOWER & MOTOR	
	4900 lbs 2223 kg
CYCLONE	
EMPTY	4700 lbs 2132 kg
UPSET CONDITION-FULL	43850 lbs 19887 kg
EXHAUST (@ DUST HOOD CONNECTION)	
	26200 A.C.F.M. @ -1" W.G. 44510 M ³ /HR @ -25mm W.G.
COMPRESSED AIR REQUIREMENT	
	80 P.S.I. (CLEAN & DRY) 5.52 bar
WATER SUPPLY REQUIRED	
	40 PSI(MIN), 60°F, 40 GAL/min 2.76 bar (MIN), 15°C, 151.4 L/min
VOLTAGE	
PRIMARY	460V/3PH/60HZ
CONTROL	120 V/1PH/60HZ

- REFERENCE DRAWING LIST:
1. BLOWER DRWG. # 200-43155
 2. CYCLONE ASS'Y DRWG. # 200-43115
 3. BYPASS DAMPER DRWG. # 200-39199

REV.	DATE	DESCRIPTION OF REVISION	ECN
3	1-6-00	ADDED NOTES & UPDATES	0242
2	4-19-99	GEN'L REV'S; BLOWER GRFX ADDED	0242
1	2-26-97	CYCLONE GRFX & TECH DATA ADDED RLS # 2071	

THIS DOCUMENT IS THE PROPERTY OF SIMPSON TECHNOLOGIES CORPORATION AND CONTAINS PROPRIETARY AND CONFIDENTIAL INFORMATION OF SIMPSON TECHNOLOGIES. THIS DOCUMENT IS LOANED IN CONFIDENCE, SUBJECT TO RETURN UPON REQUEST, ON THE EXPRESS CONDITION THAT NO COPIES SHALL BE MADE AND THAT NEITHER IT NOR THE INFORMATION CONTAINED THEREIN SHALL BE DISCLOSED TO OTHERS WITHOUT THE EXPRESS WRITTEN CONSENT OF SIMPSON TECHNOLOGIES. FURTHER THAT THE INFORMATION SHALL BE USED BY THE RECIPIENT ONLY AS EXPRESSLY APPROVED BY SIMPSON TECHNOLOGIES.



SIMPSON TECHNOLOGIES CORP.
751 SHORELINE DRIVE
AURORA ILLINOIS, U.S.A.

GENERAL ARRANGEMENT & FOUNDATION	
200 SIMPSON MULTI-COOLER	
SCALE: 3/8" = 1'-0"	FIRST RELEASE: ORDER NO: STANDARD MC200
MADE BY: RDB	DATE: 2-18-97
CHECKED BY: SJN	APPROVED BY: 200-43154

TRADE SECRET INFORMATION