

BMM WESTON

QJS

Swing Arm - Anvil Jolt + Simultaneous Jolt Squeeze

PHJ

4 Column - Anvil Jolt + High Pressure Hydraulic Squeeze

PBQ

4 Column - H.F. Jolt + Simultaneous Jolt Squeeze

HJ

Swing Arm - Anvil Jolt + High Pressure Hydraulic Squeeze

BT

Rollover Draw - Anvil Jolt + Simultaneous Jolt Squeeze

QSF

Matchplate Squeezer

CT

Swing Arm - Anvil Jolt + Simultaneous Jolt Squeeze

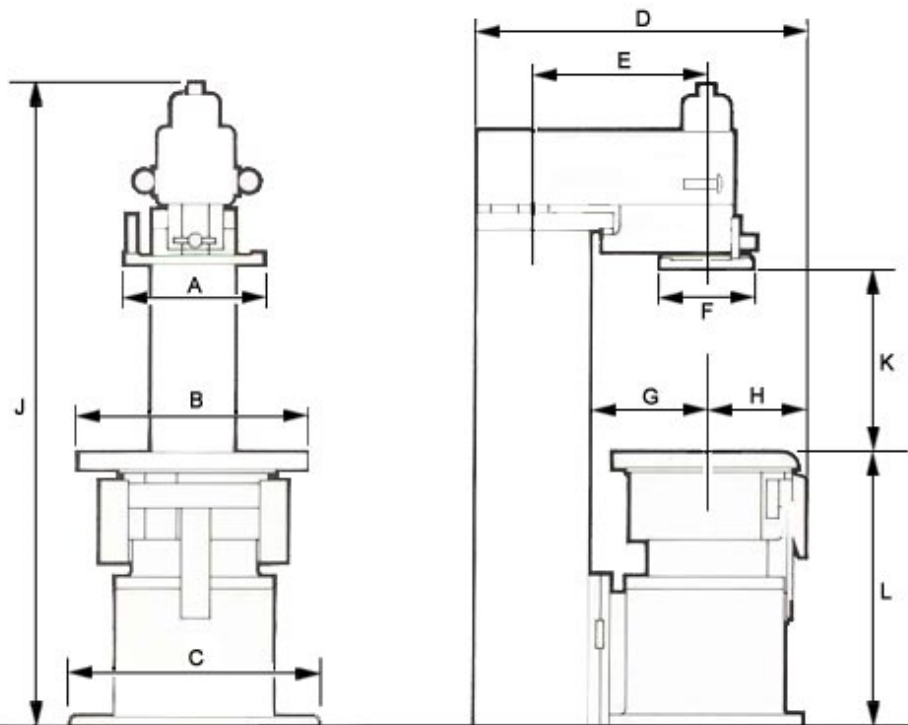
Factory Reconditioning Services

Reconditioned & Used Equipment

QSF Range

- Noise Controlled Anvil Jolt
- Simultaneous Jolt Squeeze
- Two-Hand No Tie-Down Control for Squeeze Operation
- Adjustable Head Height
- Valve Provided for Pattern Mounted Vibrator
- Simple Manual Operation with Knee Operated Pedal Valves

The QSF machine is manual matchplate/squeezer machine that utilizes both a low frequency, long stroke anvil jolt for pre-compaction of the mold as well as a simultaneous jolt squeeze for the final compaction. The jolt / squeeze functions of this machine are pneumatically powered.



Overall Dimensions QSF Range

	QSF 214
A	14 in 356 mm

B	25 in 635 mm
C	26-1/2 in 673 mm
D	37 in 940 mm
E	20 in 508 mm
F	14 in 356 mm
G	14 in 356 mm
H	11 in 279 mm
J	69 in 1,753 mm
KMAX	20-1/2 in 521 mm
KMIN	11-1/2 in 292 mm
L	29 in 737 mm

Technical Data

	QSF 214
Jolt Capacity*	1,000 lbs 454 kg
Static Squeeze Force*	13,855 lbs 6,284 kg
Dynamic Squeeze Force*	24,246 lbs 10,997 kg
Squeeze Stroke	5-1/4 in 133 mm
Table Size**	25 x 20-1/2 in 635 x 521 mm
Net Weight	2,240 lbs 1,018 kg

* Jolt capacity and squeeze forces calculated at 90 psi (6.2 bar).

** Alternative table sizes, daylight openings and draw strokes available upon request.

BMM Weston reserves the right to alter specifications contained in the above tables without prior notice.